

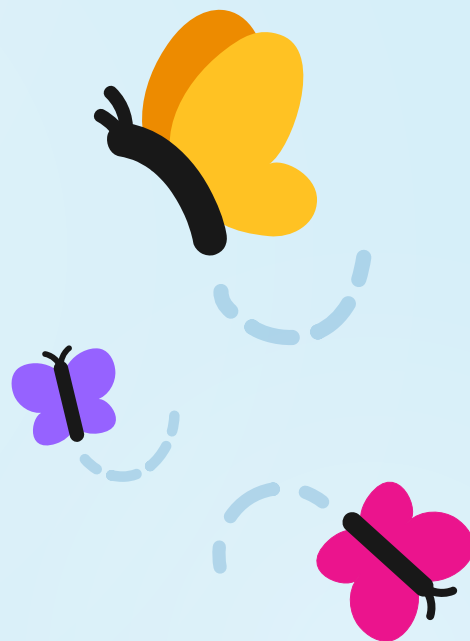
Roger Neilson Children's Hospice

# For Children. For Families. For Life.



**We offer specialized, compassionate care from diagnosis to end-of-life and grief support.**

**We enrich the quality of lives, no matter how short.**



[RogerNeilsonChildrensHospice.ca](http://RogerNeilsonChildrensHospice.ca)



# Hospice Palliative Care For Children. Strength and Support For Families.

Roger Neilson Children's Hospice is an independent not-for-profit pediatric hospice with a dedicated and caring multidisciplinary healthcare team, volunteers and support staff. We are there from the early stages of a life-limiting illness to end-of-life care and grief support. When a life ends, our compassion and support continue.

## Pediatric Hospice Palliative Care

Our clinical care, including symptom management, respite, transition to home and end-of-life, is provided in a home-like setting. We create an environment that fosters a sense of community, and the joy that comes when kids can be kids and families can create memories.

## Perinatal Program

Roger Neilson Children's Hospice has a robust perinatal program to support families who experience a loss from 20 weeks gestation onward, which includes families who experience loss following the diagnosis of a life-limiting diagnosis during pregnancy or shortly after birth. This unique program offers perinatal palliative care, emotional support, comfort and assistance, counselling, end-of-life planning, and grief support.

## Family & Caregiver Support

Children and their family members who receive care at Roger Neilson Children's Hospice have access to professional, individual and group support services to address emotional, psychological, spiritual and practical aspects of a diagnosis of a life-limiting illness for a child.

## Recreation Therapy Programs

Our recreational therapists create and deliver specialized experiences and activities that bring fun, joy, and a sense of community. The family can enjoy memorable moments through play, learning activities, and special events. Kids can be kids, enjoying everything childhood offers, from playing dress-up and listening to music to outdoor activities adapted to the children's abilities.



Roger Neilson Children's Hospice

## Hospice Palliative Care For Children. Strength and Support For Families.

### Grief Support and Services

After the death of a child, the days, years and months that follow are a journey filled with grief. We provide individual and group support for caregivers, siblings and grandparents coping with unimaginable grief, whether or not the child had previously received services at Roger Neilson Children's Hospice or CHEO.

### Find out more about Roger Neilson Children's Hospice:

[rogerneilsonchildrenshospice.ca](http://rogerneilsonchildrenshospice.ca)

Call: [613-523-6300](tel:613-523-6300), extension 1

[info@rogerneilsonchildrenshospice.ca](mailto:info@rogerneilsonchildrenshospice.ca)

Donate Today!

### Donate to Roger Neilson Children's Hospice.

When you donate to Roger Neilson Children's Hospice, your generosity and impact are felt in many ways, from purchasing equipment and technology to funding programs and services not covered by government funding. To donate, visit [rogerneilsonchildrenshospice.ca/donate](http://rogerneilsonchildrenshospice.ca/donate)



#### Roger Neilson Children's Hospice

Specialized care from diagnosis to end-of-life and grief support. Roger Neilson Children's Hospice is an independent, not-for-profit pediatric hospice. We offer a unique, home-like environment for families' most challenging journeys.

[RogerNeilsonChildrensHospice.ca](http://RogerNeilsonChildrensHospice.ca)

399 chemin Smyth Road | Ottawa, ON, K1H 8L2 | Tele.: (613) 523-6300 | Fax: (613) 523-3617